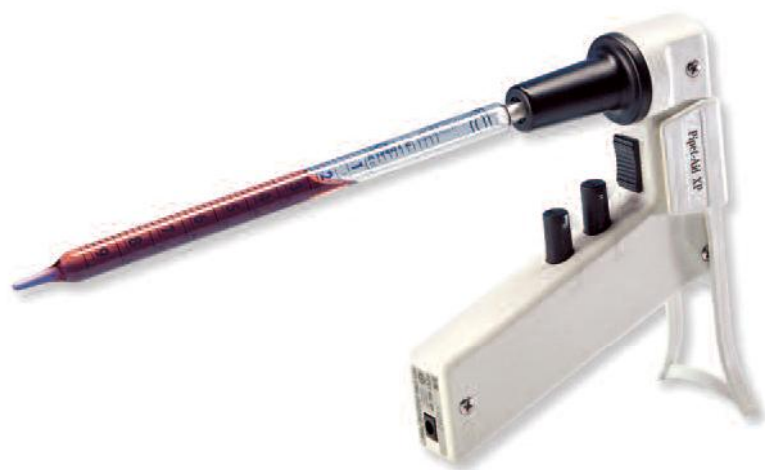


Portable Pipet-Aid® XP



- The lightweight, compact Portable Pipet-Aid®
- Three-speed settings provide more precise control for both aspirate and dispense modes
- Easy access battery replacement
- EZ Grip nosepiece with double membrane filter
- Removable stand
- Holster-type wall bracket included

Specifically designed to minimize operator fatigue, the Portable Pipet-Aid XP is smaller and lightweight. It accepts most pipets from 1 to 100 mL.

Each aspiration and dispense button has three speeds, (F) Fast, (M) Medium, (S) Slow. The medium speed is suitable for most routine techniques. Fast speed can deliver up to 50 mL in 5 seconds and can be used for rapid filling of large pipets or breaking up cell clumps. Slow speed is ideal when using small pipets or when more precise delivery is required. A gravity drain model is available which substitutes a gravity drain (G) function for the fast (F) mode on the dispense button.

The XP is powered by a 9 volt (Ni-MH) rechargeable battery.

A Tissue Culture Nosepiece, which features a unique filter element, will cease to allow air to pass in either direction if it becomes wet, alerting the user to possible contamination of the rubber insert.

Specifications

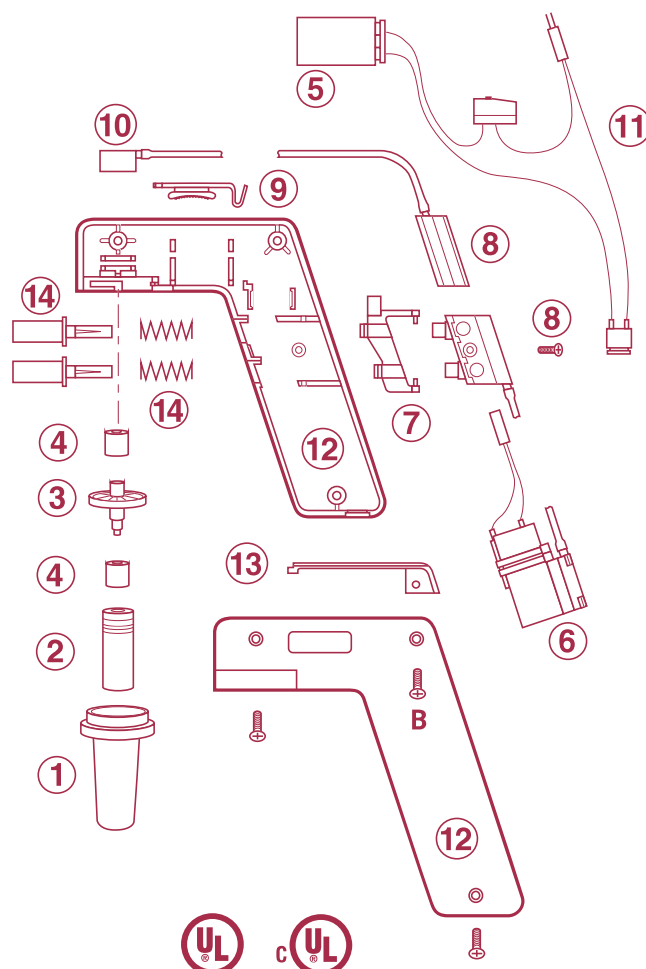
Size.....	5.5"
Weight.....	7.5 oz.
Capacity.....	Accepts 1 to 100 mL pipets
Battery.....	9 Volt Ni-MH

Cat. No.	Description
4-000-101	Portable Pipet-Aid XP supplied complete with 110V recharger plus four replacement filters
4-000-201	Same as above but 230V, CE, Euro
4-000-201-E	Same as above but 220V, CE, UK
4-000-102	Portable Pipet-Aid XP with Gravity Drain, 110V
4-000-202	Portable Pipet-Aid XP with Gravity Drain, 230V, CE, Euro
4-000-202-E	Portable Pipet-Aid XP with Gravity Drain, 220V, CE, UK

U.S. Patent Numbers: 5,214,968, 5,616,871, 5,294,405

Replacement Parts

Cat. No.		Description
4-000-002	(2)	Rubber Insert (2/pk)
4-000-030		Pipet-Aid Charger 110V, (8.7 V/8 mA)
4-000-031		Pipet-Aid Charger 230V, Euro, (8.7 V/8 mA)
4-000-033		Pipet-Aid Charger 220V, UK, (8.7 V/8 mA)
4-000-035	(5)	Ni-MH Rechargeable Battery
4-000-040	(6)	Portable Motor and Pump
4-000-051/051-S	(3)	Self-locking TC Filter 5/pk (051-S - Sterile)
4-000-052/052-S		Self-locking TC Filter 50/pk (052-S - Sterile)
4-000-057	(4)	TC Rubber Gaskets (pair)
4-000-070	(14)	Button Assembly XP/XL includes springs (pair)
4-000-072	(7)	XP Switch Operator
4-000-073	(8)	Valve Body XP/XL (complete with buttons, springs, and gaskets)
4-000-074	(9)	XP Nosepiece Release
4-000-075	(10)	XP Handle Connector
4-000-076	(11)	XP Wire Harness, Switch and Terminals
4-000-077	(12)	XP Handle Shell includes 2 Handle Halves and 1 Battery Door
4-000-078	(13)	XP Battery Door
4-000-079	(1)	EZ Grip Nosepiece
4-000-087		Tissue Culture Nosepiece Kit for XP, XL, and Hood Mate (includes 1, 2, 3, 4)
4-000-089		Pipet-Aid Holster-Type Wall Bracket



Distribuito da: